

Call for English teachers working at junior and senior high schools in Japan!



Researcher
Marina Aiura

Institute of Education,
Culture, Communication & Media,
University College London
Email: marina.aiura.23@ucl.ac.uk
Tel: +44-7751219524

I would like to kindly ask you to take in part in my research project; "Teachers' perceptions of task-based language teaching (TBLT) in junior and senior high schools in Japan".

I worked as an English teacher at a public junior high school in Hachioji, Tokyo for 6 years until March 2023. I am currently working on my master's dissertation in Teaching English to Speakers of Other Languages (TESOL) at University College London (UCL) in the UK.

I would like to ask you to fill out a questionnaire for my master's dissertation.

I really appreciate your cooperation.

If you have any questions, please contact me using the details above.

This project has been reviewed and approved by the UCL IOE Research Ethics Committee.

Thank you in advance for taking the time to read this information sheet.



**IOE – FACULTY OF
EDUCATION AND SOCIETY**

FAQ (1)



? WHO IS CARRYING OUT THE RESEARCH?

Researcher: Marina Aiura, a postgraduate student in TESOL in-service MA.

Supervisor: Amos Paran, a professor of TESOL at the University College London, Institute of Education.

? WHY ARE WE DOING THIS RESEARCH?

The English curriculum guidelines for junior high schools in Japan include the 'development of communicative competence' from 2017, but the current English education system is facing challenges to develop communicative competence. TBLT has attracted attention in the field of language education in recent years as a teaching method that contributes to the development of communicative competence. It has been introduced in English language teaching system in Hong Kong and China. The aim of this study is to investigate teachers' perceptions of TBLT in junior and senior high schools in Japan.

? WHY AM I BEING INVITED TO TAKE PART?

If you are an English teacher working in a junior or senior high school in Japan, please take part in this questionnaire. By taking part in this research, you may be able to reconsider your English teaching methods and contribute to the future improvement of school English education in Japan.

? WHAT WILL HAPPEN IF I CHOOSE TO TAKE PART?

In this study, 2 types of data are collected

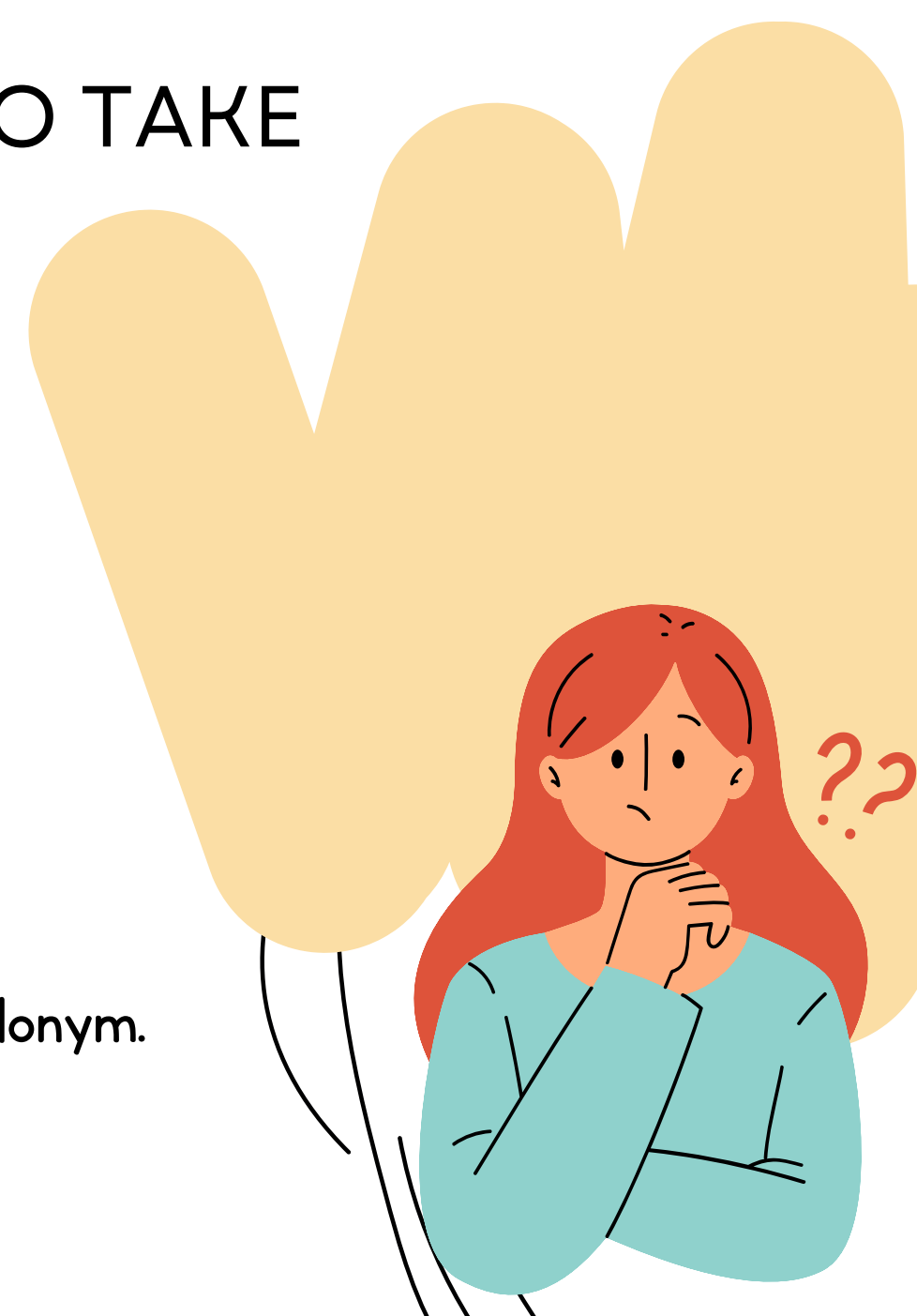
- a questionnaire
- an interview (optional)

? WILL ANYONE KNOW I HAVE BEEN INVOLVED?

All data is collected anonymously.

Interview data will be processed and published under a pseudonym.

Your personal information will not be shared.



FAQ (2)



? HOW CAN I WITHDRAW TAKING PART IN THE STUDY?

If you wish to withdraw from participation, please contact Marina Aiura. You can withdraw from participation anytime.

? WHAT WILL HAPPEN TO THE RESULTS OF THE RESEARCH?

The data will be analysed in a master's dissertation. All collected data will be erased by the end of the year. If you want a summary of the study, please enter your email address in the questionnaire. It will be sent to you by email after the study is completed.

? DO I HAVE TO TAKE PART?

It is entirely up to you whether or not you choose to take part. I hope that if you do choose to be involved then you will find it a valuable experience.



DATA PROTECTION PRIVACY NOTICE

The controller for this project will be UCL. The UCL Data Protection Officer provides oversight of UCL activities involving the processing of personal data, and can be contacted at data-protection@ucl.ac.uk

Your personal data will be processed so long as it is required for the research project. If you are concerned about how your personal data is being processed, or if you would like to contact us about your rights, please contact UCL in the first instance at data-protection@ucl.ac.uk.

You can take the questionnaire here ↓

https://qualtrics.ucl.ac.uk/jfe/form/SV_IKN9RT8XH00qaQm

(You can choose to answer in English or Japanese.)

Or scan here ↓

